



Producer series



*A New Era in Distance
and Precision.*

SIZE 12'

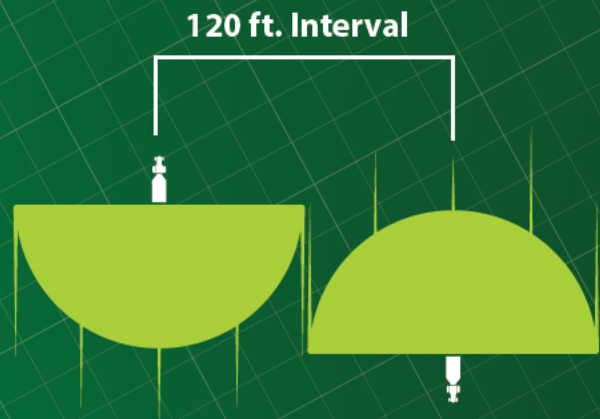
TYPE SINGLE AXLE
PULL-TYPE

MATERIAL

UREA
FERTILIZER
LIME

OVERVIEW

120' Swath
120' Interval
0' Overlap



MORE TECH INFO



The Future of Nutrient Application Begins Here

A New Level of Efficiency and Precision at an Unprecedented Swath

- Features the latest breakthrough spinner system from BBI Spreaders
- Brings greater yield potential while reducing fuel use and time spent in the field
- Largest capacity of any single-axle top-dress spreader on the market
- Saves time and fuel costs on large farms via fewer passes for each spread task
- Targeted to large-acreage farming applications as latest offering in BBI's Producer Series (alongside multi-hopper models **MagnaSpread 2** and **MagnaSpread 3**, as well as the only continuous-duty hydraulics platform on the market, **MagnaSpread ULTRA**)
- Consistent 120-foot-wide spread pattern eclipsing the former standard of 80 feet wide
- Expandable track widths (90-120 inches)

Available at BBI Dealers worldwide starting **October 2014**

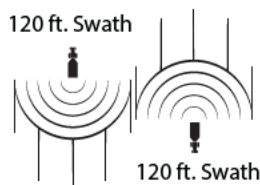


KEY FEATURES

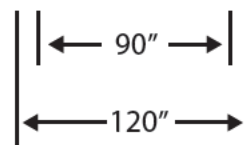
Tall, narrow tires minimize soil compaction and clear emergent plants



Precise 120-foot (36meters) swath accomplishes more with less



Expandable track width (90-120 inches)



- Designed to the highest international standards
- Available in pull-type models
- Versatile for regional material variations

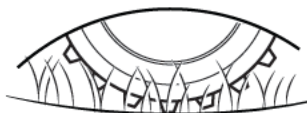


BENEFITS

Targeted application to increase yield



Less soil compaction for reduced runoff and erosion



Reduced fuel consumption, reduced material waste



- Less time in the field to complete spreading tasks
- Greater efficiency overall

Producer
series