

# WRANGLER 4550 ARTICULATING LOADER



## Material-Handling Workhorse.

Think your tractor is a jack-of-all-trades? That's nothing compared to Willmar's Wrangler loader. When it comes to material handling, there's little this workhorse can't do. From moving bulk material such as fertilizer and seed to pallet-loads of feed to plywood for construction, this 83-hp (61.9 kW) articulating loader with an operating load capacity of 2,450 pounds (1097 kg) has enough versatility to be another farmhand.

**Getting in and out of tight spots is not a problem with the Wrangler. That's because this loader oscillates up to 16 degrees so you get maximum maneuverability without the jerkiness of a skid-steer. With a turning radius of 11 (3.35 m) feet and easy hydrostatic drive, you won't find yourself with your back against the wall.**

# WORKS ANYWHERE



## On the Farm

The Wrangler is like having another farm-hand. Four bucket capacities from 20 to 45 cubic feet (.56–1.27 m<sup>3</sup>) let you move virtually any dry fertilizer product from bin to hopper.



## Articulating Body

Move in and out of tight spots with up to 40-degree articulation on both sides of the loader.



## Construction Sites and Landscaping

It's hard to imagine working a construction site or doing a landscaping job without a loader. Move mulch, rocks, sod, irrigation pipe, building material and more with the Wrangler.



## Universal Quick Coupler

The universal quick coupler lets you switch attachments quickly.



## Rental Yards

No rental yard fleet is complete without a loader. The Wrangler's articulating feature and hydrostatic drive makes this loader a particularly profitable asset.



## Joystick Operation

Steer with one hand while manipulating attachments with the joystick that's located adjacent to the steering wheel on the right.



## Bulk Storage Facilities

Mix or blend materials with a bucket, move pallets of material to a wagon or truck with the Wrangler.



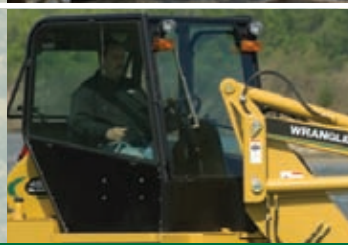
## Auxiliary Hydraulics

The pump in the 15.25-gallon (57.7 L) auxiliary hydraulic reservoir provides the high pressure and flows needed to power just about any attachment.



## Open Warehouses

Quick, agile, versatile — the Wrangler is perfectly suited for warehouse work.



## Enclosed Cab (optional)

An enclosed cab, which features a heater/defroster and windshield wipers, maximizes the Wrangler's year-round versatility.

## Features

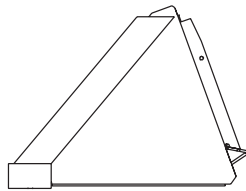
- 83-hp (61.9 kW), 178-cubic-inch (3113 cm<sup>3</sup>), 4-cylinder, Deutz turbo-diesel engine with direct fuel injection.
- Single-speed, hydrostatic, 4-wheel drive.
- Heavy-duty piston pump with 15.25-gallon (57.72 L) hydraulic reservoir.
- 19-gpm (3.8 L/m) auxiliary hydraulic system.
- Axial-piston drive motors with planetary gear power hubs.
- Orbitrol control unit.
- Single-lever joystick attachment operation.
- Frame is welded, heavy-duty, two-piece.
- Four-post ROPS with adjustable seat suspension, armrest and seat belt.
- Instrumentation includes voltmeter, engine oil pressure, engine oil temperature, hour meter and fuel gauge.
- Optional enclosed cab with heater/defroster and front wiper.
- Universal quick coupler for attachments.
- Height to top of cab: 94" (238.76 cm) overall height with 20-cubic-foot bucket extended: 14'1" (4.3 m); dump height: 99" (251.46 cm) overall dumping height: 150" (381 cm); wheel base: 64.5" (163.83 cm); dump angle, fully raised: 40°.
- Bucket operating load capacity: 2,450 pounds (1097 kg); pallet fork operating load capacity: 1,575 pounds (714 kg).
- Buckets: 20- 30-, 36- and 45-cubic-foot capacities (.56, .85, 1 and 1.27 m<sup>3</sup>). Pallet fork: 42 (106.7 cm) inches.

## SPECIFICATIONS: WRANGLER 4550

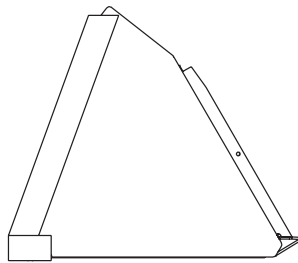
Engine	Wrangler 4550
<b>Model</b>	Deutz BF4M 2011 3.1 L (190 in. <sup>3</sup> ) 4-cylinder 83.1 hp (62 kW) @2800 rpm Turbocharged Peak torque of 199 ft.-lbs. @1600 rpm Oil-cooled Direct fuel injection Oil pan heater starting aid Certified EPA Non-Road Tier II
<b>Drive</b>	Hydrostatic Rexroth Series 22 Variable displacement axial piston 4.33 CIR Full-time, 4-wheel drive Travel pedal controls speed Transmission control lever (F-N-R) controls direction
<b>Wheel motors</b>	Eaton single speed Fixed displacement axial piston
<b>Power hubs</b>	Auburn Planetary gear
<b>Brakes, service</b>	Hydrostatic braking
<b>Brakes, parking</b>	Multiple discs (spring-applied, hydraulic pressure-released) located on rear power hubs
<b>Auxiliary hydraulic system</b>	19 gpm ( 72 L/m) @2500 psi @2800 rpm Flat-faced hydraulic connectors, front-mounted
<b>Steering</b>	Articulated 40° each way Hydraulic orbit control valve 11-ft. (3.35 m) turning radius loader clearance circle at carry position with the general purpose bucket (20 ft. <sup>3</sup> , 74 in. wide)
<b>Speed</b>	Forward: 0–10 mph Reverse: 0–8 mph
<b>Axles</b>	Formed structure steel w/reinforcement
<b>Cooling package</b> Hydraulic oil Engine oil	Integral side-by-side system 3.7 in. x 8 in. 19 in. (583 in. <sup>3</sup> ) 3.7 in. x 13.7 in. 19.7 in. (998.6 in. <sup>3</sup> )
<b>Frame</b>	Welded, heavy-duty, two-piece frame Oscillation 8° each way
<b>Fuel type</b>	Diesel
<b>Fuel tank capacity</b>	16 gallons (60.6 L)
<b>Electrical systems</b>	12 VDC 55-amp alternator Front: 2 halogen work lights, 2 amber flashers Rear: 1 halogen work light, 2 amber flashers, 2 red clearance lights
<b>Hydraulic reservoir capacity</b>	15 gallons (57.7 L)
<b>Cab</b> <b>Seat</b> <b>Instrumentation</b> <b>Enclosed cab (optional)</b>	ROPS/FOPS (Rollover Protection Structure/Falling Object Protective Structure) Adjustable suspension w/armrests and seatbelt Voltmeter, engine oil pressure, engine oil temperature, hour meter, fuel gauge Heater, defroster, front wiper
<b>Tires</b>	31 x 15.5 x 15, 8-ply R1, calcium chloride-filled 30.5 x 12.5 x 16.5, 8-ply R4, calcium-filled (optional) 31 x 15.5 x 15, 8-ply R1, puncture-proof, urethane-filled
<b>Dimensions</b> <b>A. Height to top of cab</b> <b>B. Wheel base</b> <b>C. Height to hinge pin</b> <b>D.</b> <b>D.</b>	94 in. (23.86 cm) 64.5 in. (163.83 cm) 126 in. (320 cm) 150 in. (381 cm) 99 in. (251.46 cm) 40° 40° ???? 169.2 in. (429.77 cm) w/20 ft.3 general purpose bucket  Over tires, Rims in: 60 in. (152.4 cm); center of tread: 45 in. (114.3 cm) Over tires, Rims out: 70 in. (177.8 cm); center of tread: 55 in. (139.7 cm)  9.75 in. w/ 31 x 15.5 x 15 tires @8,160 lbs. with general purpose bucket Universal Quick Attach

**SPECIFICATIONS: WRANGLER 4550 (cont.)**

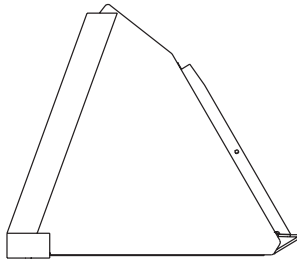
<b>Lifting</b>	
<b>Tipping load straight (SAE rated)</b>	
w/bucket	5,900 lbs. (2675 kg)
w/forks	3,920 lbs (1778 kg)
<b>Tipping load at full turn (SAE rated)</b>	
w/bucket	4,840 lbs. (2195 kg)
w/forks	3,150 lbs. (1429 kg)
<b>Operating load capacity w/bucket</b>	2,450 lbs. (1097 kg)
<b>Operating load capacity w/forks</b>	1,575 lbs. (714 kg)
<b>Bucket capacities, overall width (bolt-on cutting edge standard)</b>	
20 cu. ft. general purpose	74 in. (188 cm)
30 cu. ft. light material	63 in. (160 cm)
36 cu. ft. light material	74 in. (188 cm)
45 cu. ft. light material	84 in. (213.4 cm)
<b>Pallet forks</b>	42 in. (106.68 cm)



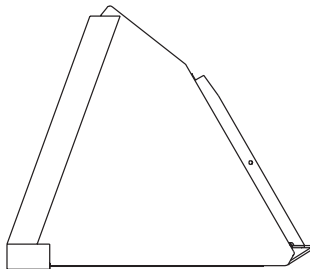
20 cu. ft. General Purpose



36 cu. ft. Light Material



30 cu. ft. Light Material



45 cu. ft. Light Material

